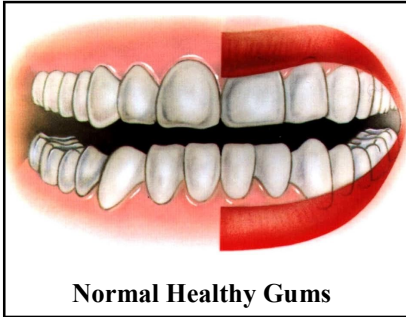
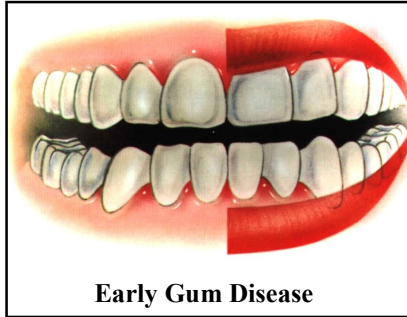


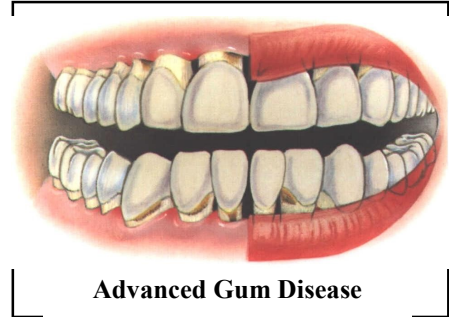
# How Gum Disease Progresses



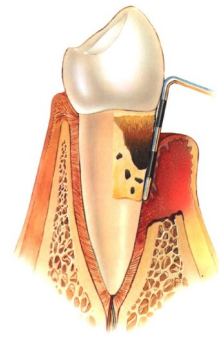
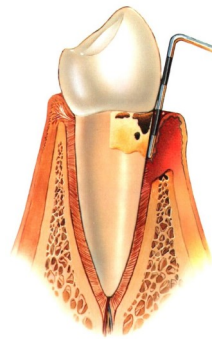
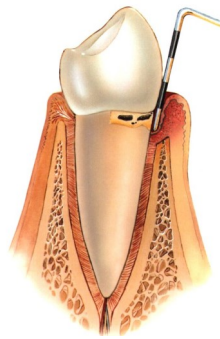
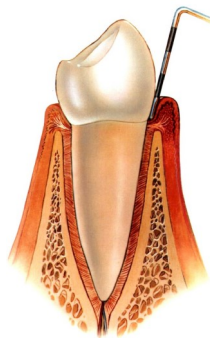
**Normal Healthy Gums**



**Early Gum Disease**



**Advanced Gum Disease**



**Normal Healthy Tooth**

- PSR score 0 or 1
- Pink, firm gums
- No bleeding
- No tartar
- Periodontal pockets are 0mm to 2mm

**Stage 1- Gingivitis**

- PSR score 1 or 2
- Gums are red, swollen and bleeding
- Tarter accumulation
- No bone loss
- Can progress to Stage2, Stage 3 and Stage4 if left untreated
- Regular cleanings and better home care is necessary

**Stage 2- Early Gum Disease**

- PSR score 2 or 3
- Bacterial plaque and tartar (a hardened plaque) continues to accumulate and spread under the gum tissue
- gums are red, swollen and bleeding
- Periodontal pockets of 3mm to 5mm begin to form
- Deep cleanings necessary
- Prognosis with treatment is very good

**Stage 3- Moderaste Gum Disease**

- PSR score 3 or 4
- Bacteria continues to spread under the gums causing further bone destruction
- Periodontal pockets are 6mm to 8mm
- Gums begin to recede making teeth look longer
- Deeper pockets make deep cleanings less effective
- Prognosis with treatment begins to decline

**Stage 4 Advanced Gum Disease**

- PSR score 4
- Most of bone around the tooth is destroyed,
- Some periodontal pockets are 9mm plus
- Teeth feel loose
- Teeth shift
- Pus
- Painful infections
- Root cavities
- Deep cleanings totally ineffective
- Prognoses with treatment becomes very poor
- tooth loss may be inevitable.

INCREASING SEVERITY →